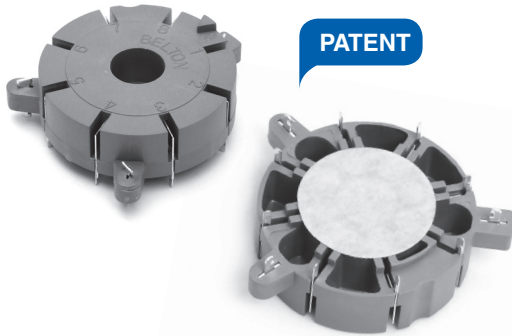


VACUUM TUBE SOCKET

VT8 SERIES

Specially designed 8 pin vacuum tube socket for auto-wave solder



Features

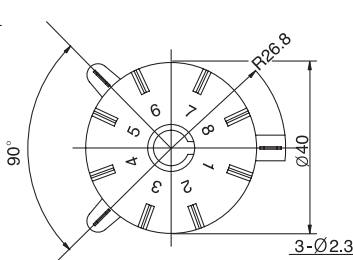
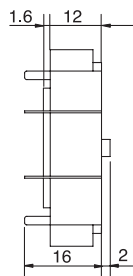
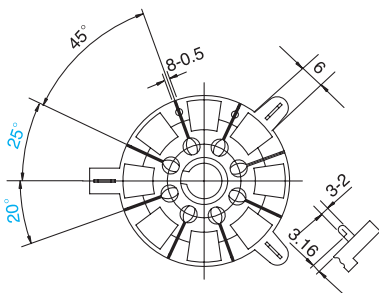
- Safety attachment with 3 positions of mounting pins
- Easy mount with the precise designed tube pins
- Glassfiber filled PPS insulating material

Applications

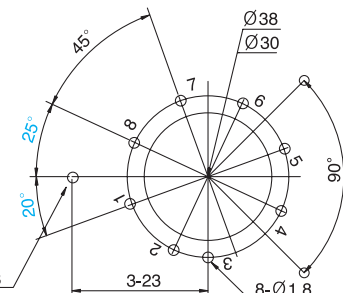
- Applicable to all types of electric and electronic equipments using vacuum tube

Dimensions

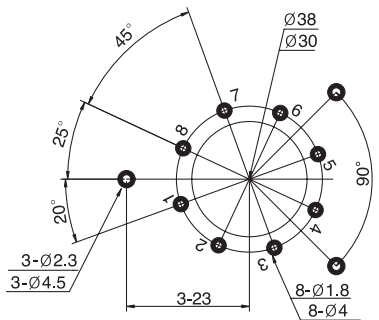
VT8-PT-2



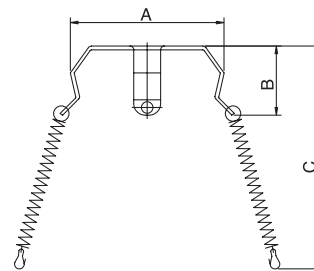
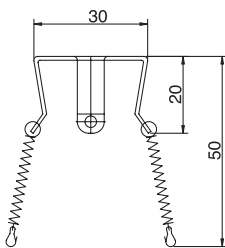
P.C.B Mounting Hole



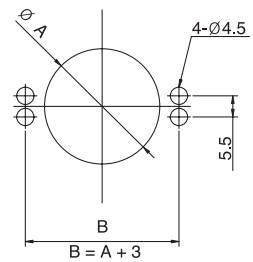
PCB LAYOUT



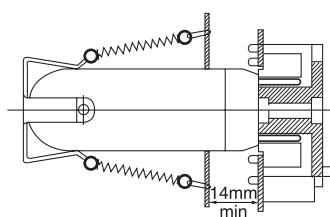
TUBE RETAINER-2



CHASSIS CUTOUT



MOUNTING DETAILS OF 6V6



MOUNTING DETAILS OF 6L 6

